

For more guidance on construction site runoff control and post-construction runoff management see:

**California Stormwater Quality Association  
Stormwater Best Management Practice  
Handbooks**

[www.cabmphandbooks.com](http://www.cabmphandbooks.com)

**Guidelines for Construction Projects**

Available at your local Planning Department or call NCSWMP.

**Erosion and Sediment Control Field  
Manual**

Available at your local Planning Department or call NCSWMP.

**Start at the Source—Design Guidance  
Manual for Stormwater Quality Protection**

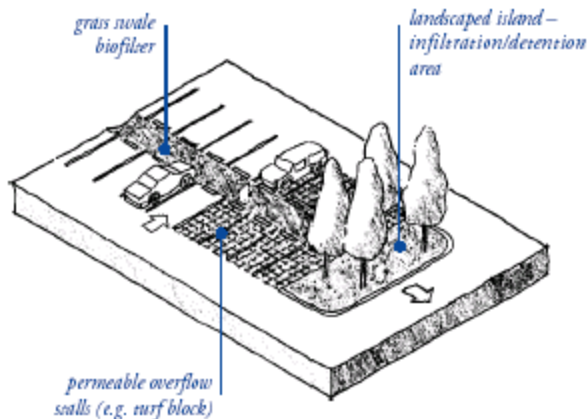
Available at your local Planning Department or call NCSWMP.

**Stream and Hillside Natural Resource  
Protection Guide**

Available at the Napa County Conservation, Development, and Planning Department or call NCSWMP.

**Construction Industry Compliance  
Assistance Center**

[www.cicacenter.org/index.cfm](http://www.cicacenter.org/index.cfm)



**Need More Information?**

Call:

**Your local Planning Department:**

City of American Canyon — 647-4360 x 123

City of Napa — 257-9530

Town of Yountville — 944-8851

City of St. Helena — 968-2658

City of Calistoga — 942-2827

County of Napa — 253-4416

**Napa County Stormwater Management  
Program (NCSWMP)**

707-253-4823

**Regional Water Quality Control Board  
San Francisco Bay Region**

1515 Clay Street, Suite 1400

Oakland, CA 94612

(510) 622-2300

**State Water Resources Control Board**

General Permit for Stormwater Discharges

Associated with Construction Activity

[www.swrcb.ca.gov/stormwtr/construction.html](http://www.swrcb.ca.gov/stormwtr/construction.html)

Or call 916-341-5537

*Brought to you by:*

**Napa County Stormwater Management Program  
NCSWMP**



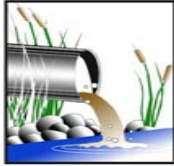
**Stormwater Pollution  
Prevention For**

*New Development and  
Redevelopment*



**A GUIDANCE BROCHURE  
FOR DEVELOPERS**

# Site Planning & Design Issues for Pollution Prevention



Water pollution is a growing concern in Napa County. Water pollution results when contaminants such as sediment, nutrients, pathogens, and oil, enter our creeks and rivers.

These pollutants enter our waterways either through overland flow (nonpoint source) or by running off our streets and into culverts that discharge directly into streams without treatment (point source).

Major grading associated with land development can impact the environment by increasing sediments and other pollutants in our creeks. However, proper site planning and design can minimize pollution both during construction and after completion.

## It's the Law

Federal stormwater regulations adopted by the Environmental Protection Agency require most cities and counties to adopt measures for controlling pollutants from new development and redevelopment.

The Cities of Napa, St. Helena, Calistoga, Town of Yountville, and the County of Napa have responded to these regulations by adopting a Stormwater Management Program. The collective efforts of these municipalities to prevent pollution is called the Napa County Stormwater Management Program (NCSWMP).

This brochure was designed to assist you in meeting the requirements of local agencies prior to receiving approval of your development plan.

## Construction Site Runoff Control

### General Permit for Stormwater Discharges Associated with Construction Activity

As of March 10, 2003 the California State Water Resources Control Board requires all "Construction Activity" greater than 1 acre to be permitted under the State's general permit. Construction activity includes clearing, grading, excavation, and reconstruction of existing facilities.

### Who must apply?

The owner of the land where the construction activity is occurring is responsible for obtaining a permit.

### What are the requirements?

The General permit requires property owners and their agents to:

1. Submit a Notice of Intent (NOI) and fee to State Water Resource Control Board before construction activity begins.
2. Develop and implement a Stormwater Pollution Prevention Plan (SWPPP).
3. Conduct inspections of all Best Management Practices (BMP's) before and after storm events and once every 24-hours during extended storm events.
4. Annually certify compliance with the General Permit and SWPPP.
5. File a Notice of Termination (NOT) after construction activity is completed.

### To obtain forms and other information on the General Permit for Construction Activity:

[www.swrcb.ca.gov/stormwtr/construction.html](http://www.swrcb.ca.gov/stormwtr/construction.html)

Or call the SWRCB at: 916-341-5537

## Post-Construction Runoff Management

### Phase II Stormwater Regulations

NCSWMP partners require new development and redevelopment projects to implement source and/or treatment control measures to prevent or reduce impacts to water quality. The extent to which projects can incorporate these measures will depend upon the local land use and the local site characteristics of each project.

### Strategies for Water Quality Protection

Three basic strategies can be used to ensure that your project protects water quality:

1. The first strategy (and most effective) is to minimize runoff from the project. This can be achieved by reducing the amount of impervious surfaces, minimizing directly connected impervious surfaces, and conserving and enhancing natural vegetation.
2. The second strategy is to control the sources of pollutants. Examples include covering outdoor material and garbage storage areas, improving landscape designs and irrigation methods, and implementing good housekeeping practices.
3. The third strategy (and least effective) is to treat contaminated runoff from the site. This strategy should be used as a last resort in cases where source controls are not possible. Runoff can be treated by using vegetated swales to infiltrate runoff into the soil, constructing detention basins, or using various treatment technologies like stormwater interceptors and filtering media.

### Long-term maintenance of control measures

Once BMP's are designed into a project, they must be appropriately operated and maintained